

Kansas Individual Data on Student (KIDS)

October 2014



KIDS: Kansas Individual Data on Students



- KIDS is the State Student ID assignment and core data student collection system.
 - Note that we do not collect or use SSNs.
- IDs follow students as they move between programs, schools, and districts.
- This helps eliminate duplication and supports management of longitudinal records for state and federal reporting and program monitoring.
 - For example, in 2013 through KIDS over 200 students were identified that would have been reported by multiple districts, saving the state approximately \$1.2 million.



What data are collected in KIDS?

For all PK-12 students

- **Demographic**

- Name, Birthdate, Race/Ethnicity, Gender

- **Transportation**

- Miles transported, Round Trip, Address, Non-resident

- **Enrollment and Attendance**

- School (Attendance/Accountability/Funding), Residence District
- Days in Membership & Attendance, Truancy
- Minutes Enrolled, Concurrent Enrollment
- Exit Withdrawal Date / Type, Special Circumstances Transfer
- Post Graduation Plans



What data are collected in KIDS?

- **Program Participation**

- Free/Reduced Lunch, Virtual Education, Child of Military Family
- SPED: Primary Disability / Gifted / 504
- Homeless Residence / Neglected/ Title I Participation
- ESOL: Entry Date (Program/US) /
First Language / Bilingual Contact Min
- CTE Contact Minutes
- State Assessments: Subject / Test Options
- Immigrant Status/Birth Country/Refugee Status



- **Course Outcomes**

- Course Identifier, Completion status /Educator ID
- Letter Grade / Percent Grade / Pass-Fail

Collection information is published at

<http://community.ksde.org/Default.aspx?tabid=2491>



Considerations & Limitations

- Schools and districts are required to report only data that are necessary to support state and federal reporting/funding.
- Data are useful only if it is of high quality. KSDE has implemented a number of initiatives to continuously address data quality.



Data Security & Confidentiality

- Privacy and confidentiality are a primary consideration and restrict how we can provide access to data.

Access may be granted to:

- Approved school and district staff through authenticated applications (Educators, District & School Leaders, Program Administrators, Data Administrators)
- Approved KSDE staff and vendors through authenticated applications (Program Administrators, Contracted vendor for support of programs [e.g., CETE for administering state assessments], Helpdesk Support, Technical Staff for Troubleshooting)
- Individuals authorized through our Data Governance process (aggregate data e.g., researchers)

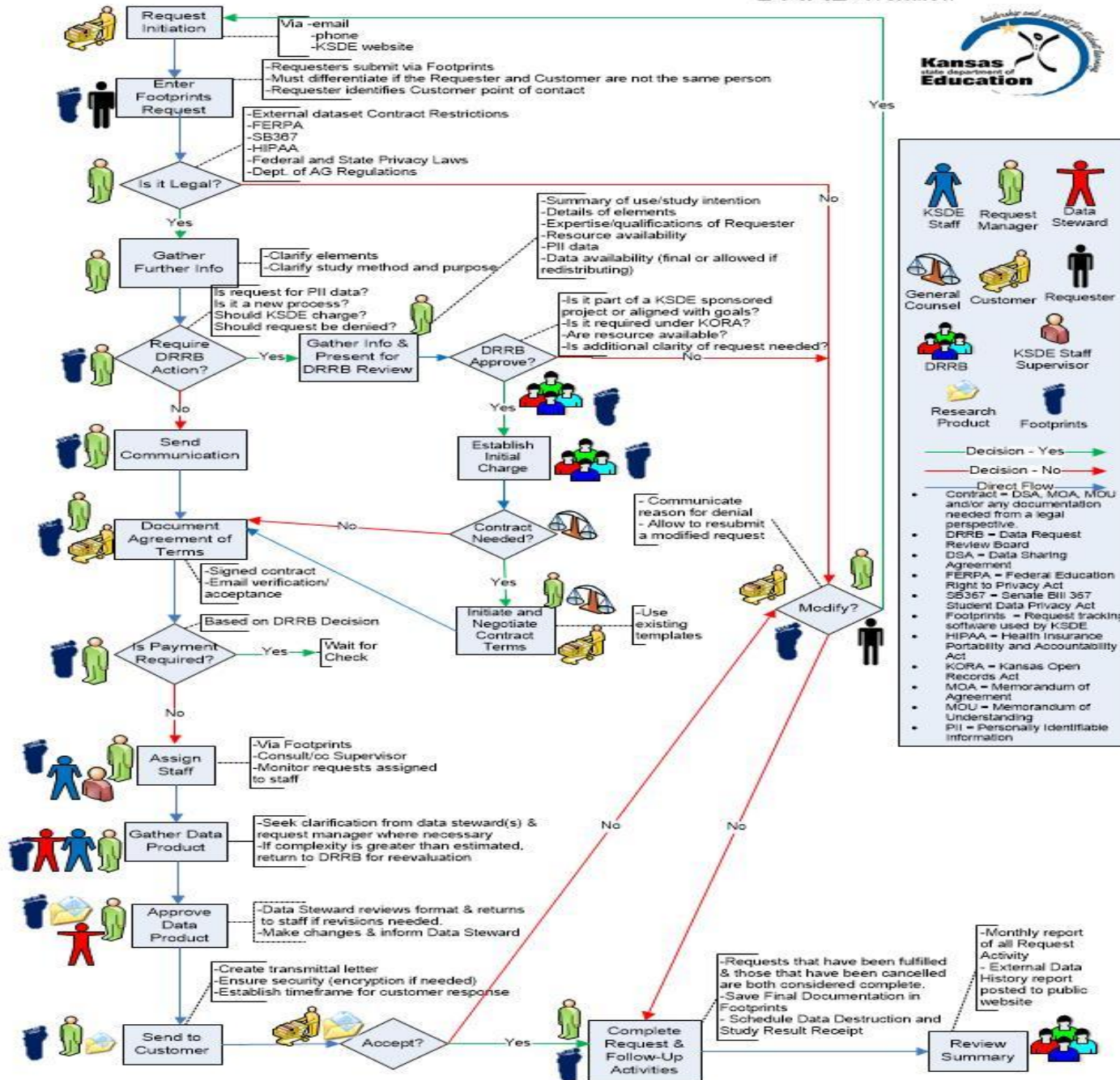


Data Security & Confidentiality

**Kansas Department of
Education Data
Governance**

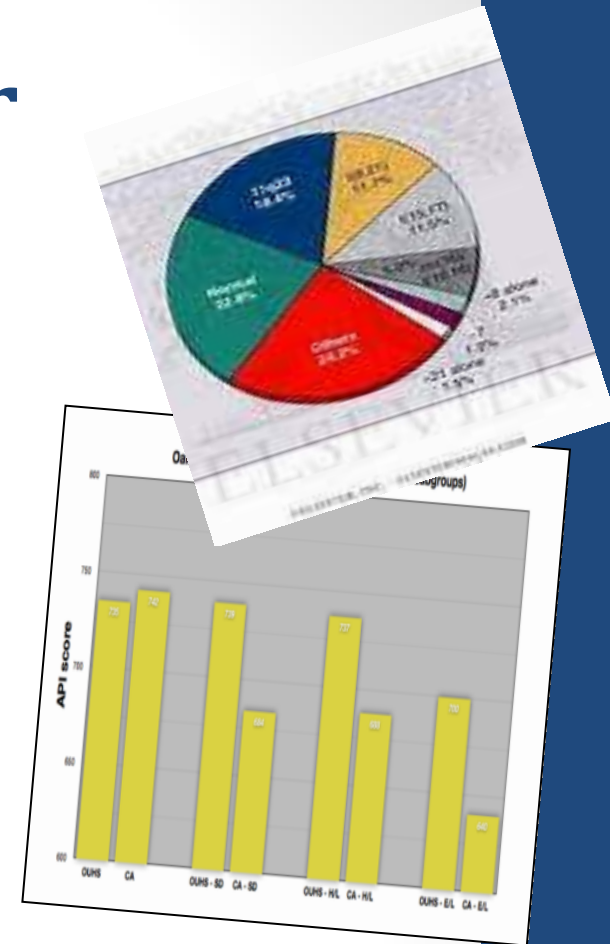


DRRB Workflow



KIDS data is the basis for

- Calculations for state funding
- State and federal reporting
 - All data provided to the federal government is aggregate data (no individual student data are provided!)
- Public reporting
- Administering state assessments
- School accountability
- Authenticated reports back to school staff to inform instruction and to monitor and improve programs
- Populating program area data collections to minimize redundant data entry and data quality issues.



How are KIDS data used?

- Direct Certification

- Data received from DCF are combined with KIDS data to certify children for free and reduced meals, eliminating a massive paperwork requirement for schools and parents.

- Virtual Education

- KIDS collects data on students participating in Virtual Education programs in order to calculate state funding for virtual weighting

- KBI Reports

- KIDS is used to locate “missing” students reported by the KBI, and to notify district administrators for follow-up.



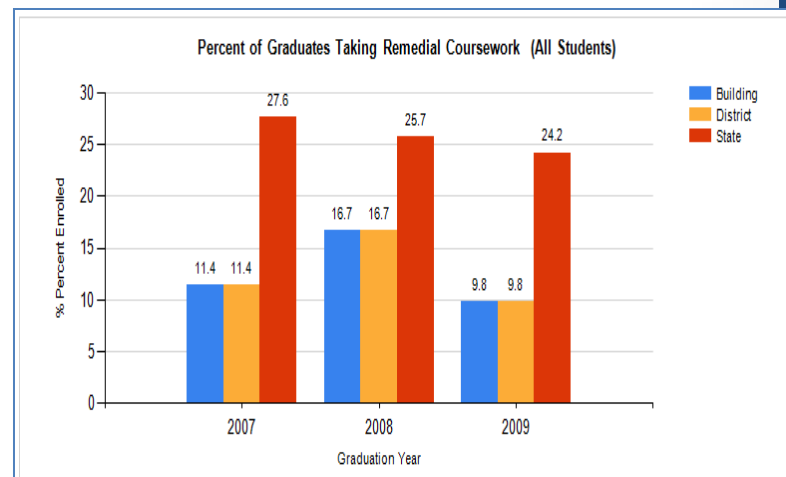
How are KIDS data used?

- College Readiness Dashboards - aka High School Feedback Reports

- College Readiness Dashboard - available to all schools & districts through the authenticated System for Education Enterprise in Kansas (SEEK)

[SEEK - Legislature 2-2014.pptx](#)

- HSFB provides reports for schools regarding students' performance as they leave K12 and move to postsecondary institutions.
- Saves districts approximately \$175,500 yearly as well as costs for resources to analyze National Student Clearinghouse data.



How are KIDS data used?



- **Qualified Admissions**

- Student course & assessment outcomes are provided to school counselors in order to determine the student's progress toward individual goals based on KBOR Qualified Admissions requirements.

- **Electronic Student Record Exchange**

- Allows schools to electronically request and transfer student records when students transfer between schools.
 - Critical for effective education of highly mobile populations such as students of military families, foster care students, and migrant students
 - Minimize delay for student enrollment and attendance at new school
 - Provides secure mechanism for transfer of student data
 - Ensures student is placed in appropriate classes and programs



