



Kansans **CAN**

KIDS PLANNED CHANGES 2018-2019

Information Technology
Melanie Scott, Trainer
Sarah Palubinski, Trainer
Chris Ortega, Senior Trainer

Kansas leads the world in the success of each student.

OVERVIEW

KIDS Planned Changes

- What is new?
- Collection Schedule
- Update Fields
- New Fields

KCAN Collection

Best Practices

Q&A Session

PLANNED CHANGES NOTE



These changes are current as of today.....



KIDS PLANNED CHANGES

What's New

DATA ELEMENTS:

What's New?

- D39: ESOL/Bilingual Program Participation Code - changes
- D54: Early Learning Participant – name change
- D55 : KPEP - name change

DATA ELEMENTS:

What's New?

- D62 – D82: History/Government Fields
- D92: Kansas English Language Proficiency Assessment – updates
- KCAN: Migrant – Add field



KIDS PLANNED CHANGES

Collection Schedule

KIDS PLANNED CHANGES: EXPECTED COLLECTION SCHEDULE

Collection	Focus	Submission Window
ASGT	Obtain SSIDs, update core student data, and claim students	Any Time
ENRL	Funding and Enrollment: populate PBR and SO66	09/20/18-10/11/18
TEST	State Assessments: populate CETE website, populates Measurable Objectives, etc.	09/04/18-06/28/19
SMSC	REAP Funding	12/03/18-01/04/19
EOYA	End of Year Accountability: populates Measurable Objectives, state and federal counts	05/13/19-06/28/19
TASC	Teacher and Student Connection for Success in School and Interim Assessments	08/01/18-06/14/19
KCAN	Course information to support the Kansas State Board of Education Kansans Can initiatives	08/01/18-06/16/19
EXIT	Students leaving school, date, reason, and any post-graduation plans	As soon as possible after leaving. Once the Dropout/Graduation Summary report for 17-18 school year is submitted.
QERY	Retrieve existing KIDS data about students without claiming them or changing the data	Any time



KIDS PLANNED CHANGES

Removed Fields

DATA ELEMENTS: Remove Fields

D39: ESOL/Bilingual Program Participation Code

- Value 4 = Monitored ESOL student ...

DATA ELEMENT: Remove Fields

History Government

- D79: State History/Government Assessment
- D80: State History/Government Assessment Proctor ID
- D81: State History/Government Assessment First Name
- D82: State History/Government Assessment Last Name

DATA ELEMENTS: Remove Fields

Career Competency Qualifiers

- D83 - D86
- Any time Career Competency Qualifier mentioned



KIDS PLANNED CHANGES

Updated Fields

DATA ELEMENT: UPDATES

D25: Concurrent Enrollment

- Clarifying language on dual vs concurrent enrollment

D39: ESOL/Bilingual Program Participation Code

- Language change – one year proficiency
- Language change – first year monitored

DATA ELEMENT: UPDATES

D54: Early Learning Participant

- Field name change - Kansas Preschool Program (KPP)

D55: Kansas Parent Education Program Participant

- Field name change - Kansas Parents as Teachers Program (KPAT)

D92: Kansas English Language Proficiency Assessment

- Value updates – which values with respect to each student



KIDS PLANNED CHANGES

New Fields

DATA ELEMENTS: New Fields

D39: ESOL/Bilingual Program Participation Code

- Value 7 = Transitional year. Student has scored proficient on their assessment. They will have to report instructional minutes for this value.
- Value 8 = Monitored ESOL student. Students are listed as monitored for no more than two years.



KIDS PLANNED CHANGES

KCAN Collection

COLLECTION: KCAN- NEW FIELDS

KCAN

- Add Fields
 - First Instructional Date - first day a migrant student received instruction for the current school year
 - Last Instructional Date - last day of a migrant student's instruction for the current school year
 - Instructional Hours Completed – number of hours completed by a migrant student during a term

KCCMS LANGUAGE CHANGES

2013-SB155 Governor's CTE Bill

2018-SB155 Eliminating criminal and professional penalties for non-intoxicating cannabinoid medicine.

Since we're talking about education and not marijuana, let's call it Excel in CTE, instead!

KCCMS NEW TITLES FOR LOCAL COLLEGE/CAREER

CollegeCareer N	Not dual credit/Regular course
CollegeCareer D	Dual credit NOT funded (college/high school)
CollegeCareer T	CTE course NOT funded or part of an approved Pathway (Local CTE Program)
CollegeCareer X	CTE credit/not funded IN an approved Pathway (Introductory level)
CollegeCareer F	CTE credit/funded course IN an approved Pathway (Technical/Application level)
CollegeCareer C	CTE Dual credit funded IN an approved Pathway/ NOT Excel in CTE/Taught within K-12 building
CollegeCareer L	CTE Dual Credit IN an approved program/Pathway/Excel in CTE Funded only
CollegeCareer R	CTE Dual credit NOT part of an approved program/Pathway/ Excel in CTE Funded only



KIDS PLANNED CHANGES

Program Updates and Best Practices

BEST PRACTICES

School Entry Date

- Needs to be reset to match most recent school entry date

For example: Student enrolls in August and EXITS in December. Student returns to your school in March. Your KIDS record should reflect the most recent school entry date which is in MARCH.

- Many SIS systems retain the original building and district entry dates and must be manually re-entered to reflect the most recent entry dates.



PROGRAM UPDATES AND BEST PRACTICES

EXIT DATE

- Students that are a no show at the start of the school year need to be exited their last day in attendance the prior school year
 - For example: Student a no show in August 15, 2018; student should be exited May 22, 2018
- Student should be exited the day after the last day you took attendance on the student
 - For example: Last day in Attendance was 03/31/18; EXIT date would be 04/01/18.



Kansans **CAN**

ATTENDANCE

Kansas leads the world in the success of each student.

WHY ATTENDANCE MATTERS?

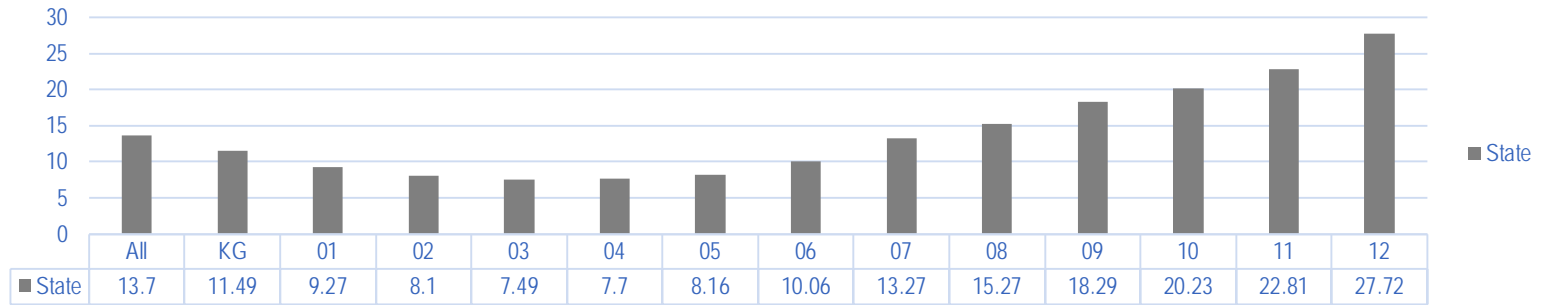
- Lack of Attendance = #1 reason students drop out of school
- Correlation between attendance and reading and numeracy skills below grade level in Grade 3
- Intuitive & Research Based
 - Relationships can't be built, gains from high quality instruction realized, and quality interventions and supports can't be effective if students aren't in school

CHRONIC ABSENTEEISM

- 10% or more absences based on membership days YTD
- Excused + Unexcused + Suspensions = ABS for C.A.
- Publically reported in Fall of '18
- State Rate in 16-17 = 13.7% (69,196 students)
 - Find your Chronic Absentee rate in AMOSS

CHRONIC ABSENTEEISM

Sum of Chronically Absent Rate by Grade Level and Organization



WHAT IS ABSENT?

- State law = “substantial part of the school day”
- Federal Guidance: “substantial” = more than 50%
- What is your district/school policy?

WHAT IS ABSENT?

- Illness/Dr. Appointment
- Family Emergency or Bereavement
- Disciplinary Action – OSS
- Legal/Judicial requirement
- Family Activity
- Student employment
- No transportation
- Skipping (Truancy)
- Unknown

EXITING AN ABSENT STUDENT

- Student “disappears”, repeated attempts to locate and make contact fail
- After 10 school days you should drop the student with an exit day the day after the students last day of attendance
 - November 1 – Present
 - November 2, 3, 4, 5, 8, 9, 10, 11, 12, 15 – Absent (can't locate)
 - Drop Student with an exit date of November 2

WHAT IS PRESENT?

- In School
- Nontraditional setting (homebound, hospital, off campus distance education)... if receiving instruction from a licensed teacher
- Disciplinary (ISS)
- Out of Building (field trip, work study, under direct supervision of staff)
- Out of Building Activity (co-curricular or extra-curricular)



POLICIES AND PROCEDURES

- What is your district policy for what is an absence? (1 hour, 2 hours, >50%, etc.)
- What are your procedures for taking attendance? (Who, when, how, changing attendance)
 - Should be the same throughout the district
 - Track attendance to the minute



CONTACT INFORMATION

John Girodat, Education Program
Consultant

jgirodat@ksde.org

785-296-3444



KIDS PLANNED CHANGES

Training

TRAININGS

- KIDS New Staff
- Pre-Collection Workshops
- Data Quality Certification (DQC) Program
- DQC Concentration Electives
- KIDS Conference Calls
 - Format has been updated and includes a short informative presentation at the beginning of each call.



KIDS PLANNED CHANGES

Question and Answer Session

The Kansas State Department of Education does not discriminate on the basis of race, color, national origin, sex, disability, or age in its programs and activities and provides equal access to the Boy Scouts and other designated youth groups. The following person has been designated to handle inquiries regarding the non-discrimination policies:
KSDE General Counsel, Office of General Counsel, KSDE, Landon State Office Building, 900 SW Jackson, Suite 102, Topeka, KS 66612, (785) 296-3204