



Kansans **CAN**

# KIDS PLANNED CHANGES 2018-2019

Information Technology  
Melanie Scott, Trainer  
Sarah Palubinski, Trainer  
Chris Ortega, Senior Trainer

Kansas leads the world in the success of each student.

# OVERVIEW

## KIDS Planned Changes

- What is new
- Collection Schedule
- Remove Fields and Values
- Update Fields and Values

# OVERVIEW

## KIDS Planned Changes

- New Fields and Values
- KCAN Collection
- SPED
- Best Practices
- Q&A Session

# PLANNED CHANGES NOTE



These changes are current as of today.....



# KIDS PLANNED CHANGES

What's New

# DATA ELEMENTS:

## What's New?

- D39: ESOL/Bilingual Program Participation Code - changes
- D54: Early Learning Participant – name change
- D55 : KPEP - name change

# DATA ELEMENTS:

## What's New?

- D62 – D82: History/Government Fields
- D92: Kansas English Language Proficiency Assessment – updates
- KCAN: Migrant – Add field
- SPED – New Collection



# KIDS PLANNED CHANGES

Collection Schedule



# KIDS PLANNED CHANGES: EXPECTED COLLECTION SCHEDULE

Collection	Focus	Submission Window
ASGT	Obtain SSIDs, update core student data, and claim students	Any Time
SPED	Student demographics for Sped-Pro.	Any Time
ENRL	Funding and Enrollment: populate PBR and SO66	09/20/18-10/11/18
TEST	State Assessments: populate CETE website, populates Measurable Objectives, etc.	09/04/18-06/28/19
SMSC	REAP Funding	12/03/18-01/04/19
MILT	Military Funding	02/20/19-03/18/19
EOYA	End of Year Accountability: populates Measurable Objectives, state, and federal counts	05/13/19-06/28/19
TASC	Teacher and Student Connection for Success in School and Interim Assessments	08/01/18-06/14/19
KCAN	Course information to support the Kansas State Board of Education Kansans Can initiatives	08/01/18-08/16/19
EXIT	Students leaving school, date, reason, and any post-graduation plans	As soon as possible after leaving. Once the Dropout/Graduation Summary report for 17-18 school year is submitted.
QERY	Retrieve existing KIDS data about students without claiming them or changing the data	Any time



# KIDS PLANNED CHANGES

Removed Fields and Values

# DATA ELEMENTS: Remove Fields and Values

- D39: ESOL/Bilingual Program Participation Code
  - Value 4 = Monitored ESOL student ...
- D62: History/Government Grouping Indicator 1
- D63: History/Government Grouping Indicator 2
- D69: Manufacturing Production Grouping Indicator
- D70: Design and Pre-Construction Grouping Indicator

# DATA ELEMENTS: Remove Fields and Values

- D71: Finance Grouping Indicator
- D72: Comprehensive Business Grouping Indicator
- D73: AV Communications Grouping Indicator
- D80: State History/Government Assessment Proctor ID
- D81: State History/Government Assessment First Name
- D82: State History/Government Assessment Last Name

# DATA ELEMENTS: Remove Fields and Values

## Career Competency Qualifiers

- D83: General CTE Assessment – Values 3 & 6
- D84: Comprehensive Agriculture Assessment – Values 3, 4, 6, & 7
- D85: Animal Systems Assessments – Values 3 & 6
- D86: Plant Systems Assessments – 3, 4, 6, & 7

# DATA ELEMENT: Remove Fields and Values

- D87: Manufacturing Production Assessment
- D88: Design and Pre- Construction Assessment
- D89: Finance Assessment
- D90: Comprehensive Business Assessment
- D91: AV Communications Assessment



# KIDS PLANNED CHANGES

Updated Fields and Values

# DATA ELEMENT: Updated Fields and Values

- D10: Current Grade Level
  - Updated description language to align programs
- D14: Current School Year – 2019
- D40: ESOL Bilingual Program Ending Date
  - Updated... one year proficiency...transitional year



# DATA ELEMENT: Updated Fields and Values

- D54: Early Learning Participant
  - Field name change - Kansas Preschool Program (KPP)
- D55: Kansas Parent Education Program Participant (KPEP)
  - Field name change - Kansas Parents as Teachers Program (KPAT)

# DATA ELEMENT: Updated Fields and Values

- D73: State History Government Assessment
  - Updated language...no assessment
  - (Pilot year – assessment not through KITE)
- D92: Kansas English Language Proficiency Assessment
  - Value updates – new program participation codes

# DATA ELEMENT: Updated Fields and Values

- D96: User Defined Field 1
- D97: User Defined Field 2
- D98: User Defined Field 3

# DATA ELEMENT: Updated Fields and Values

## TASC Data Field

- C13: School Year = 2019

## KCAN Data Field

- F13: School Year = 2019



# KIDS PLANNED CHANGES

New Fields and Values

# DATA ELEMENTS: New Fields and Values

- D39: ESOL/Bilingual Program Participation Code
  - Value 7 = Transitional year. Student scored proficient ...
  - Value 8 = Monitored ESOL...no more than two years.

# DATA ELEMENTS: New Fields and Values

- D82: American College Testing (ACT) Assessment
  - Student will take ACT
  - D10: Current Grade Level =16.
- D83: ACT WorkKeys Assessment
  - Student will take ACT WorkKeys
  - D10: Current Grade Level = 16



# KIDS PLANNED CHANGES

KCAN Collection



# COLLECTION: KCAN- NEW FIELDS

## KCAN

- Add Fields (If F16: 1 = Yes)
  - First Instructional Date - current school year
  - Last Instructional Date - current school year
  - Instructional Hours Completed – upon Exit (F22: "04")

# COLLECTION: KCAN- NEW FIELDS

## KCAN

- Renumbering
  - F32: User Filed 1
  - F33: User Filed 2
  - F34: User Filed 3

# KCCMS LANGUAGE CHANGES

2013-SB155 Governor's CTE Bill

2018-SB155 Eliminating criminal and professional penalties for non-intoxicating cannabinoid medicine.

Since we're talking about education and not marijuana, let's call it Excel in CTE, instead!

# KCCMS NEW TITLES FOR LOCAL COLLEGE/CAREER

CollegeCareer N	Not dual credit/Regular course
CollegeCareer D	Dual credit NOT funded (college/high school)
CollegeCareer T	CTE course NOT funded or part of an approved Pathway (Local CTE Program)
CollegeCareer X	CTE credit/not funded IN an approved Pathway (Introductory level)
CollegeCareer F	CTE credit/funded course IN an approved Pathway (Technical/Application level)
CollegeCareer C	CTE Dual credit funded IN an approved Pathway/ NOT Excel in CTE/Taught within K-12 building
CollegeCareer L	CTE Dual Credit IN an approved program/Pathway/Excel in CTE Funded only
CollegeCareer R	CTE Dual credit NOT part of an approved program/Pathway/ Excel in CTE Funded only



# KIDS PLANNED CHANGES

SPED Collection (New)

# COLLECTION: KCAN- NEW FIELDS

## SPED (Special Education Students)

- Entry into Sped-Pro without claiming
  - D32: Primary Disability - WD = Yes,...
  - 2018-2019
  - No reports



# KIDS PLANNED CHANGES

Program Updates and Best Practices

# BEST PRACTICES

School Entry Date - Reset to recent

Example:

Student enrolls August; EXITS December.

Student returns March; SED is MARCH

- Many SIS's retain original entry dates
  - Must be manually re-entered to recent



# PROGRAM UPDATES AND BEST PRACTICES

## EXIT DATE

- “No show” students exit prior year
  - “No show” in August, exited May
- Exit day after the last “attendance”
  - Last attended 03/30/18; EXIT 04/02/18.



Kansans **CAN**

# ATTENDANCE

Kansas leads the world in the success of each student.

# WHY ATTENDANCE MATTERS?

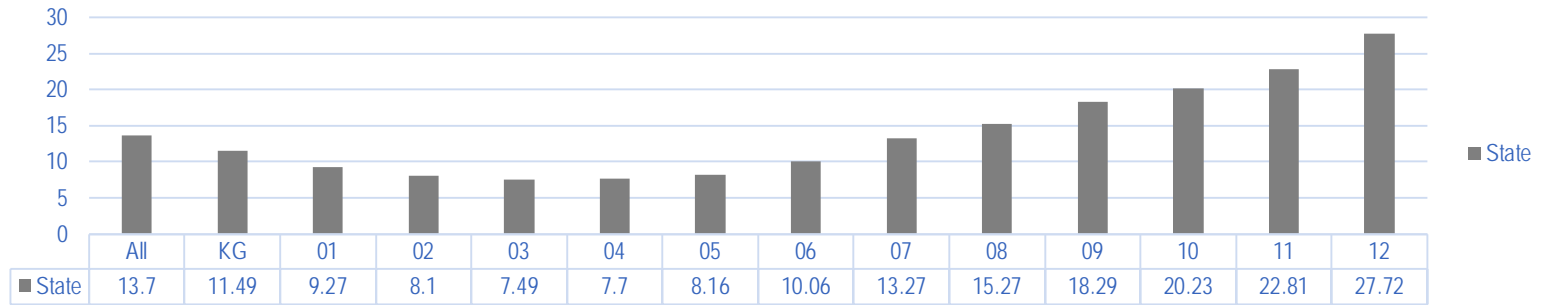
- Lack of Attendance = Top drop out
- Attendance, reading, and numeracy skills correlation
  - Below grade level in Grade 3
- Intuitive & Research Based – student absences
  - Relationships not built, lack quality instruction
  - No effective quality interventions and supports

# CHRONIC ABSENTEEISM

- 10% or more absences - membership days YTD
- Excused + Unexcused + Suspensions = ABS for C.A.
- Publically reported Fall '18
- State Rate 16-17 = 13.7% (69,196 students)
  - Find your Chronic Absentee rate - AMOSS

# CHRONIC ABSENTEEISM

Sum of Chronically Absent Rate by Grade Level and Organization



# WHAT IS ABSENT?

- State law = “substantial part...school day”
- Federal Guidance: “substantial” = more than 50%
- What is your district/school policy?

# WHAT IS ABSENT?

- Illness/Dr. Appointment
- Family Emergency or Bereavement
- Disciplinary Action – OSS
- Legal/Judicial requirement
- Family Activity
- Student employment
- No transportation
- Skipping (Truancy)
- Unknown

# EXITING AN ABSENT STUDENT

- Student “disappears”, repeated location attempts fail
- After 10 school days drop student
  - Exit day after student’s last attendance
    - November 1 – Present
    - November 2 - 15 – Absent (can’t locate)
    - Drop/Exit Student November 2



# WHAT IS PRESENT?

- In School
- Nontraditional setting (homebound, off campus education)...
  - If receiving instruction from licensed teacher
- Disciplinary (ISS)
- Out of Building (field trip, work study, ...)
- Out of Building Activity (co/extra-curricular)

# POLICIES AND PROCEDURES

- Your district absence policy? (>50%, etc.)
- Your attendance procedures? (Who, when, how...)
  - Should be same throughout district
  - Track attendance to the minute



## CONTACT INFORMATION

John Girodat, Education Program  
Consultant

[jgirodat@ksde.org](mailto:jgirodat@ksde.org)

785-296-3444



# KIDS PLANNED CHANGES

Training

# TRAININGS

- KIDS New Staff
- Pre-Collection Workshops
- Data Quality Certification (DQC) Program
- DQC Concentration Electives
- KIDS Conference Calls
  - Updated format - short presentation and Q&A



# KIDS PLANNED CHANGES

## Question and Answer Session

The Kansas State Department of Education does not discriminate on the basis of race, color, national origin, sex, disability, or age in its programs and activities and provides equal access to the Boy Scouts and other designated youth groups. The following person has been designated to handle inquiries regarding the non-discrimination policies:  
KSDE General Counsel, Office of General Counsel, KSDE, Landon State Office Building, 900 SW Jackson, Suite 102, Topeka, KS 66612, (785) 296-3204